

Circular Chasers

Circular Chasers

DRSA

Solid Adjustable (Non-Opening) Circular Chaser Diehead

*** THREADING DONE IN ONE PASS ***

Replaces acorn and insert style non-opening, solid adjustable heads

The introduction of this extra light thread cutting diehead is for use on machines with reversing spindles, ie. rotary transfer and CNC machining centers used in the same fashion as a rigid tapping system.

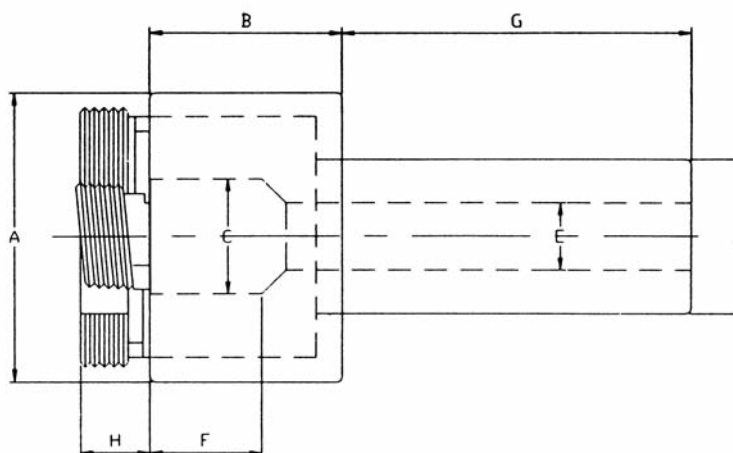
Because RSVP dieheads feature externally mounted chasers, threading right up to shoulders is possible, while access for coolant is excellent.

Also, with the units presetting system, chasers can be removed for grinding over 100 times and then set to the correct center height and rake angle to suit a wide range of materials. Threads from 1/4" up to 1-5/8". RSVP Tooling's exclusive modular shank dieheads provide the ability to choose the specific shank adapter suitable for your machine or for use in multiple machines. The shank adapter option also minimizes cost associated with shank replacement due to common wear and use.

DRSA Diehead Overview



DRSA Coolant Induced Diehead



Dimensions

4 Chaser DRSA

Head Size	EDP#	A	B	C	D	E	F	G	H	Thread Range
9/16	9927	2.875	1.470	0.625	1.000	0.500	0.750	1.500	0.781	1/4" - 9/16"
13/16	9928	3.625	1.625	0.875	1.500	0.500	1.000	2.000	0.781	5/16" - 13/16"
1	9929	4.062	1.810	1.062	1.500	0.500	1.000	2.000	0.781	3/8" - 1"

5 Chaser DRFSA

Head Size	EDP#	A	B	C	D	E	F	G	H	Thread Range
13/16	9930	3.625	1.625	0.875	1.500	0.500	1.000	2.000	0.781	7/16" - 13/16"
1	9931	4.062	1.810	1.062	1.500	0.500	1.000	2.000	0.781	7-16" - 1"